

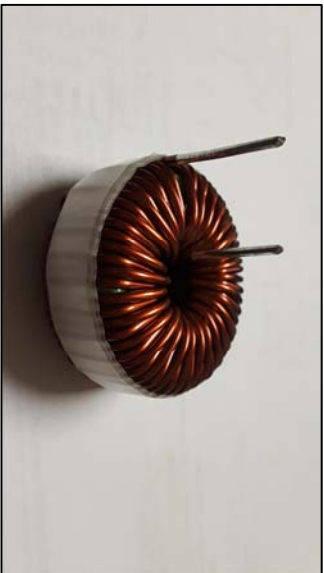
The information contained in this drawing is the sole property of CMS Coil Winding Specialist. Any reproduction in part or whole without written permission of CMS Coil Winding Specialist is prohibited.

DIMENSIONAL TOLERANCES
INCHES [MM]

A	B	C	D	X
MAX	MAX	MIN	REF	REF
2.50 [63.50]	1.32 [33.52]	0.50 [12.70]	0.08 [2.08]	1.10 [27.94]

REVISION HISTORY

REV	ECN	DESCRIPTION	BY	DATE	CHK	DATE
B	—	UPDATED ELEC. & MECH. SPEC.	TN	02/22/2018	JL	02/22/2018
C	—	UPDATED SPEC.	TI	06/10/2020	JM	06/10/2020



7 BUILD TO ROHS COMPLIANCE AND LEAD FREE.

USING A PERMANENT MARKING METHOD

MARK PART NUMBER AND REVISION. IF APPLICABLE

WRAP INDUCTOR WITH 3M # 79 OR EQUAL

5 (I.E. COIL MUST REST FLAT ON PCB). LEADS MUST BE TANGENT TO THE CORE
REMOVE INSULATION AND TIN LEADS 0.50 INCH, FLUSH WITH THE COIL EDGE, AS SHOWN

4 CONSTRUCTION:

THESE SPECIFICATIONS ARE BASED ON LOW RIPPLE CURRENT

WEIGHT: 292 GRAMS TYPICAL

INTERWINDING CAPACITANCE = 50pF TYP @ SRF

SRF = 730kHz TYPICAL

|Z| = 27 KILLO-OHMS TYP @ SRF

RECOMMENDED AMBIENT OPERATING TEMP: -40°C TO 125°C

HIPOT TEST FOR WINDING TO CORE ISOLATION = 1250 VDC 10 SEC

CURRENT RATING : 26 AMPS, 50°C TEMP. RISE WITH SOME AIR FLOW

DCR = 28 MILLI-OHMS MAX.

INDUCTOR DC BIAS: SEE TABLE ON THE RIGHT

INDUCTANCE = 1mH±15% @ 0 AMP DC BIAS, 1.0 KHz, 300mV

3 SPECIFICATIONS @ 25°C :

2 WIRE: UL RECOGNIZED 200°C RATED MAGNET WIRE
CORE: POWDERED TOROIDAL CORE, CMS BYTE MARK OR OTHER APPROVED PART

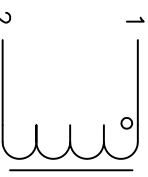
1 MATERIAL: UL RECOGNIZED 94V-0 FOR FLAMMABILITY, RATING CLASS N (200°C MIN.) REQUIRED

ANY TOLERANCE. THIS DIM. CAN VARY A LITTLE FROM PART TO PART.

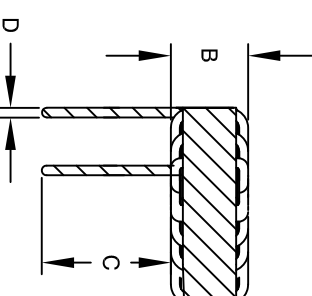
*TYP IN DIM. TABLE REFERS TO A NON-CRITICAL TYPICAL (AVERAGE) DIM. WITHOUT

NOTES: UNLESS OTHERWISE STATED, READ NOTES FROM BOTTOM UP.

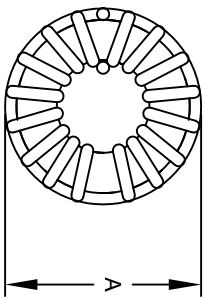
CAGE CODE: 5DME2



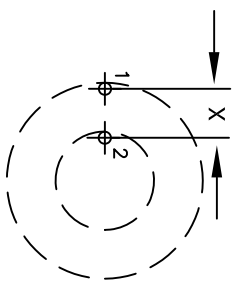
SCHEMATIC



FRONT VIEW



BOTTOM VIEW



MOUNTING HOLES PATTERN

DC BIAS TABLE

DC BIAS (AMP)	L @ 1.0 KHz
0	1002uH
5	901uH
10	655uH
13	516uH
15	435uH
20	282uH
23	215uH
26	168uH

CODE IDENT	MFG. P/N	DESCRIPTION	ITEM NO.
------------	----------	-------------	----------

PARTS LIST

AUTOCAD	SOLIDWORKS	DATE	TITLE	SIZE	SCALE	SHEET	OF
—	—	—	COILWS.COM, INC	B	2=1	1	1
—	—	—	www.coilws.com	—	—	—	—
—	—	—	CWS Coil Winding Specialist.	—	—	—	—
—	—	—	353 W Grove Ave	—	—	—	—
—	—	—	Orange, CA 92865	—	—	—	—
—	—	—	TOROIDAL POWER INDUCTOR	—	—	—	—
—	—	—	1mH, 26 Amps, Horizontal	—	—	—	—
—	—	—	ENGR. JM	—	—	—	—
—	—	—	10/04/2017	—	—	—	—
—	—	—	APPR. JL	—	—	—	—
—	—	—	10/04/2017	—	—	—	—
—	—	—	DO NOT SCALE DRAWING	—	—	—	—